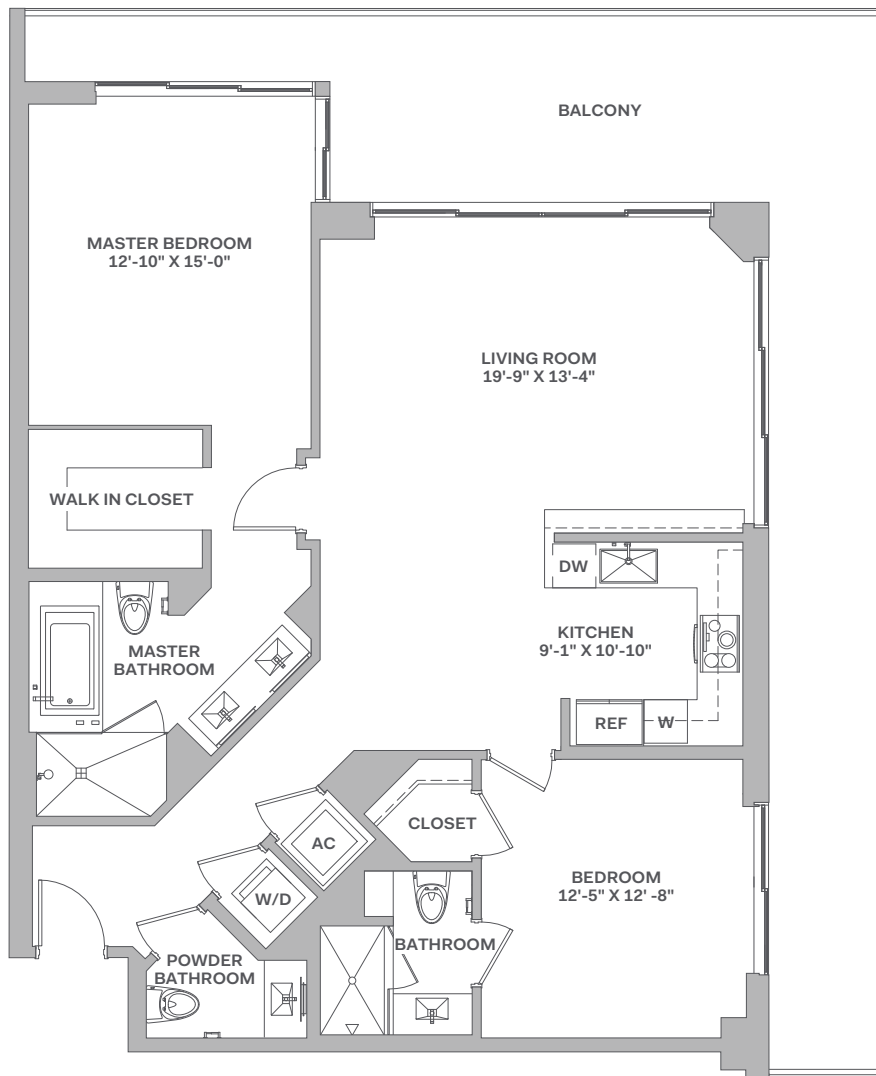
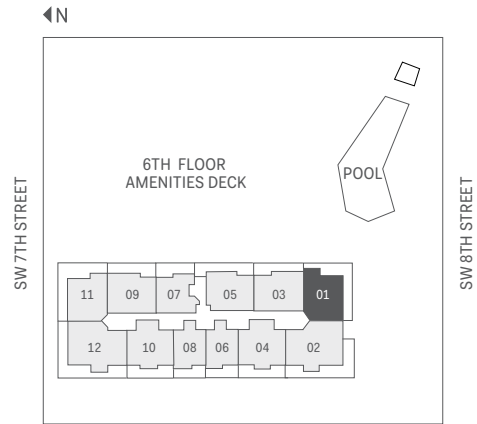


# 01 LINE

## 2 BEDROOMS | 2.5 BATHROOMS

FLOORS: 12, 14-36

RESIDENCE (12, 14-21)	1,389 sq. ft.	129 sq. mt.
RESIDENCE (22-33)	1,384 sq. ft.	129 sq. mt.
RESIDENCE (34-36)	1,378 sq. ft.	128 sq. mt.
BALCONY	292-452 sq. ft.	27-42 sq. mt.
<b>TOTAL</b>	<b>1,681-1,836 sq. ft.</b>	<b>156-170 sq. mt.</b>



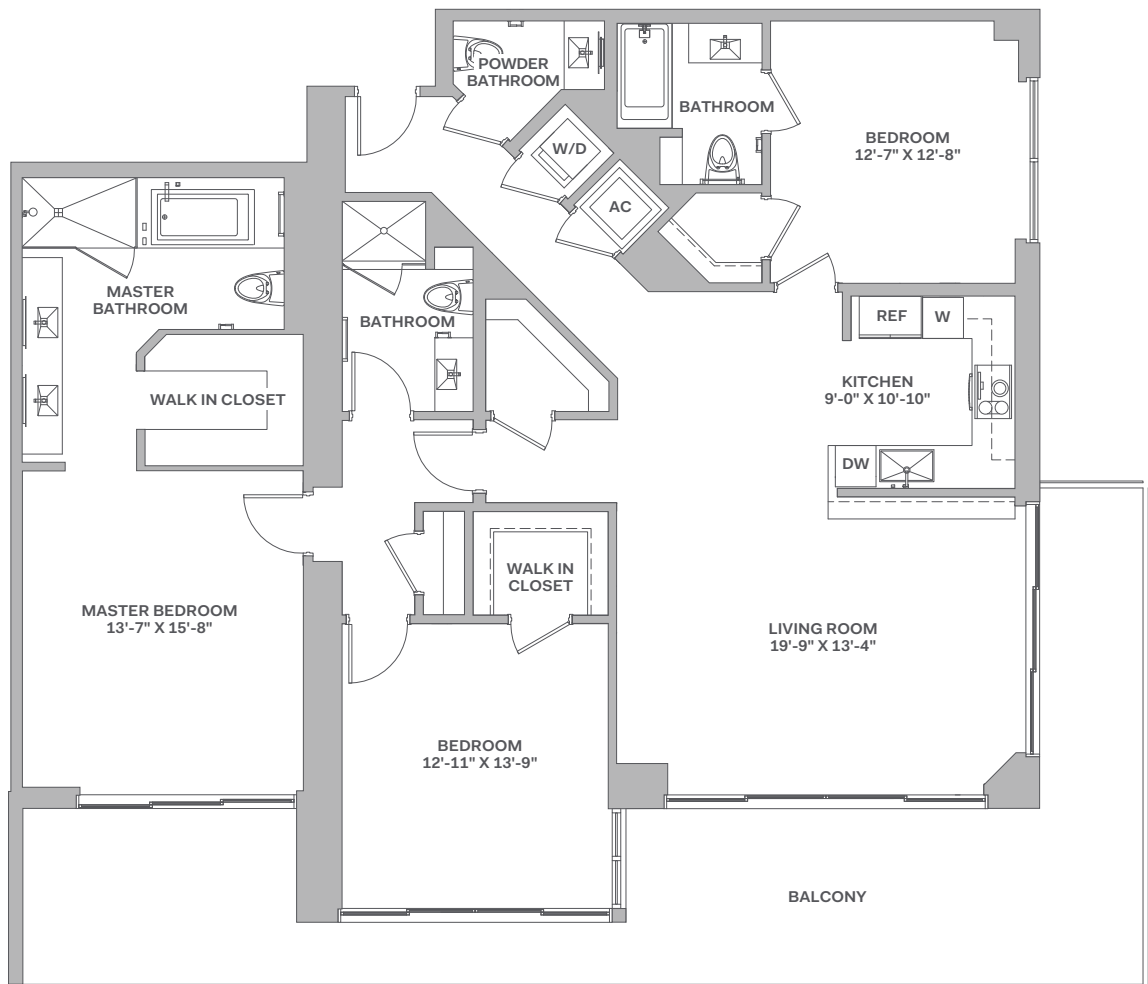
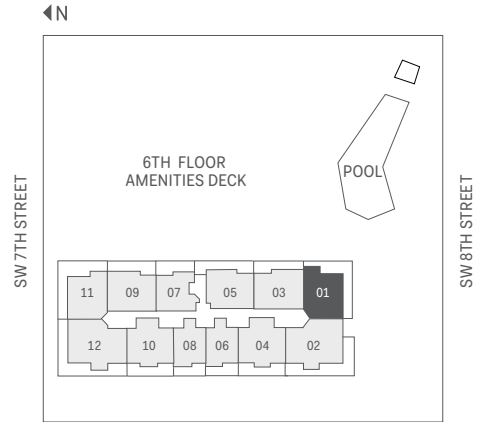
Stated dimensions are measured to the exterior boundaries of the exterior walls and the centerline of interior demising walls, including common elements such as structural walls and other interior structural components of the building, and in fact vary from the dimensions that would be determined by using the description and definition of the "Unit" set forth in the Declaration (which generally only includes the interior airspace between the perimeter walls and excludes interior structural components). For your reference, the area of the Unit, determined in accordance with those defined unit boundaries, is 1,270 square feet (levels 12, 14-33) and 1,267 square feet (levels 34-36). Note that measurements of rooms set forth on this floor plan are generally taken at the greatest points of each given room (as if the room were a perfect rectangle), without regard for any cutouts. Accordingly, the area of the actual room will typically be smaller than the product obtained by multiplying the stated length times width. All dimensions are approximate and may vary with actual construction, and all floor plans and development plans are subject to change. The size and configuration of balconies and terraces varies throughout the building. The balcony depicted above is among the larger balconies and is not reflective of the actual size or configuration of the balcony for each unit of this unit type. For the actual size and configuration of the balcony for your unit, see Exhibit "2" to the Declaration of Condominium. See legal disclaimer on back cover.

# 02 LINE

## 3 BEDROOMS | 3.5 BATHROOMS

FLOORS: 12, 14-36

RESIDENCE (12, 14-21)	1,850 sq. ft.	172 sq. mt.
RESIDENCE (22-33)	1,853 sq. ft.	172 sq. mt.
RESIDENCE (34-36)	1,852 sq. ft.	172 sq. mt.
BALCONY	446-450 sq. ft.	41-42 sq. mt.
<b>TOTAL</b>	<b>2,296-2,303 sq. ft.</b>	<b>213-214 sq. mt.</b>



Stated dimensions are measured to the exterior boundaries of the exterior walls and the centerline of interior demising walls, including common elements such as structural walls and other interior structural components of the building, and in fact vary from the dimensions that would be determined by using the description and definition of the "Unit" set forth in the Declaration (which generally only includes the interior airspace between the perimeter walls and excludes interior structural components). For your reference, the area of the Unit, determined in accordance with those defined unit boundaries, is 1,655 square feet (levels 12, 14-21), 1,676 square feet (levels 22-33) and 1,691 square feet (levels 34-36). Note that measurements of rooms set forth on this floor plan are generally taken at the greatest points of each given room (as if the room were a perfect rectangle), without regard for any cutouts. Accordingly, the area of the actual room will typically be smaller than the product obtained by multiplying the stated length times width. All dimensions are approximate and may vary with actual construction, and all floor plans and development plans are subject to change. The size and configuration of balconies and terraces varies throughout the building. The balcony depicted above is among the larger balconies and is not reflective of the actual size or configuration of the balcony for each unit of this unit type. For the actual size and configuration of the balcony for your unit, see Exhibit "2" to the Declaration of Condominium. See legal disclaimer on back cover.

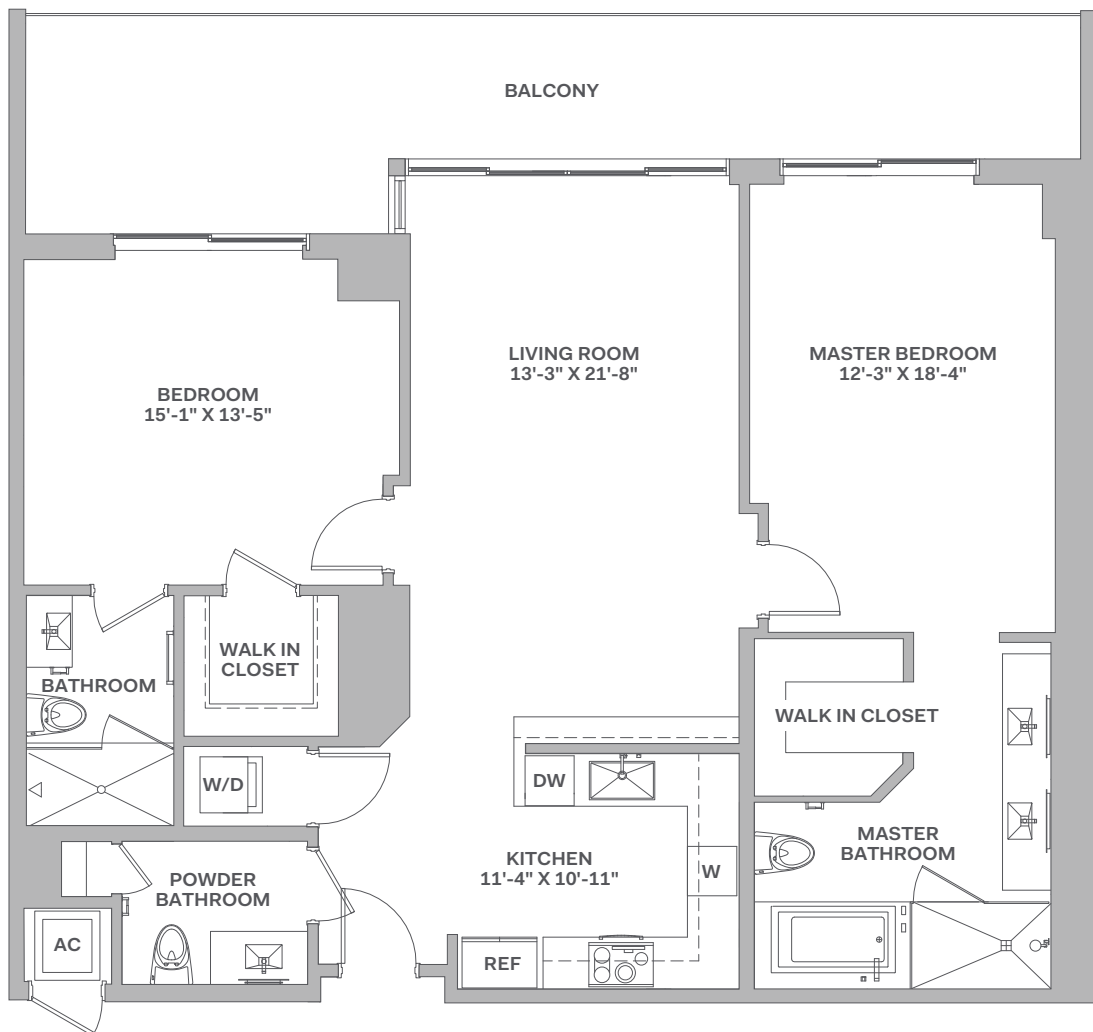
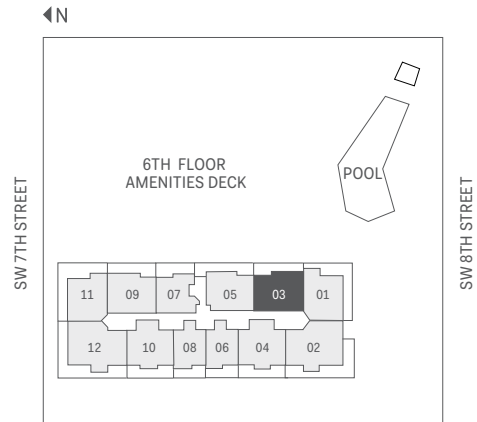
# 03

LINE

## 2 BEDROOMS | 2.5 BATHROOMS

FLOORS: 10, 12, 14-41

RESIDENCE (10)	1,373 sq. ft.	128 sq. mt.
RESIDENCE (12, 14-21)	1,371 sq. ft.	127 sq. mt.
RESIDENCE (22-33)	1,376 sq. ft.	128 sq. mt.
RESIDENCE (34-41)	1,385 sq. ft.	129 sq. mt.
BALCONY	85-276 sq. ft.	8-26 sq. mt.
TOTAL	1,462-1,652 sq. ft.	135-153 sq. mt.

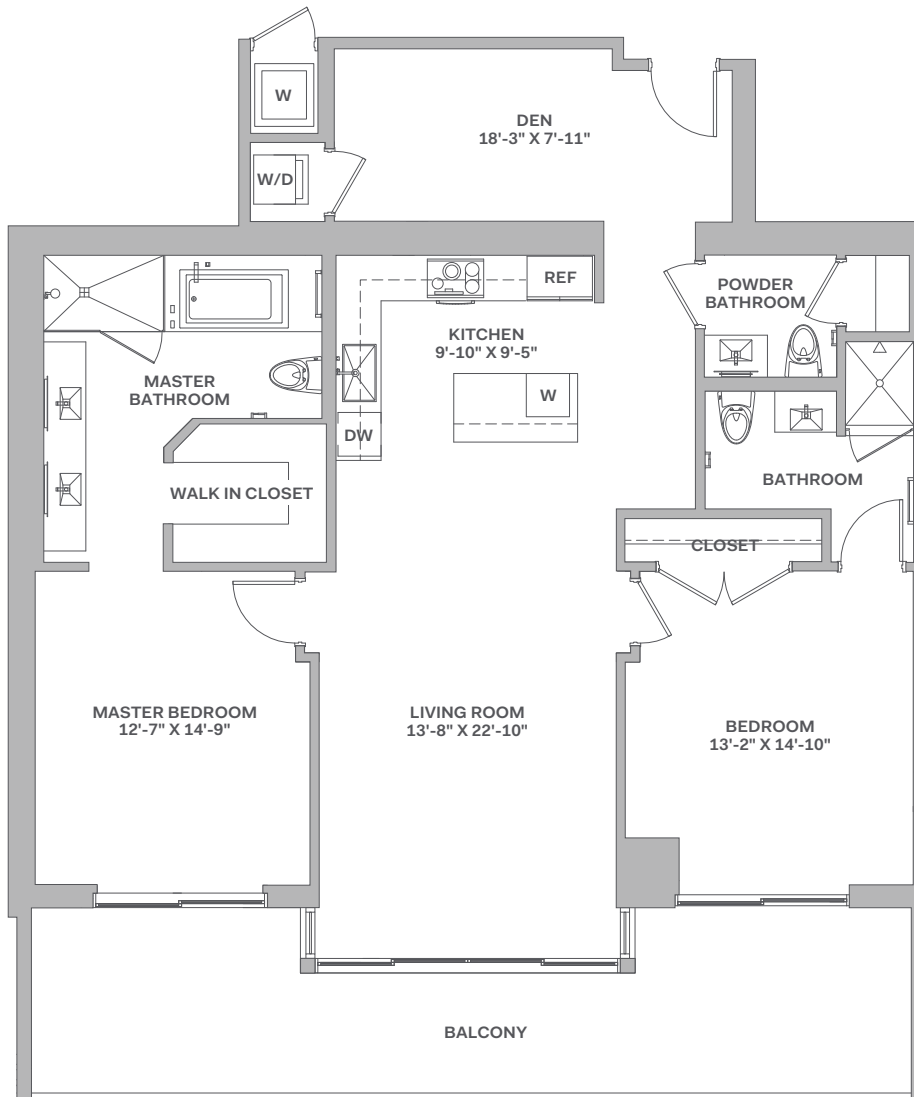
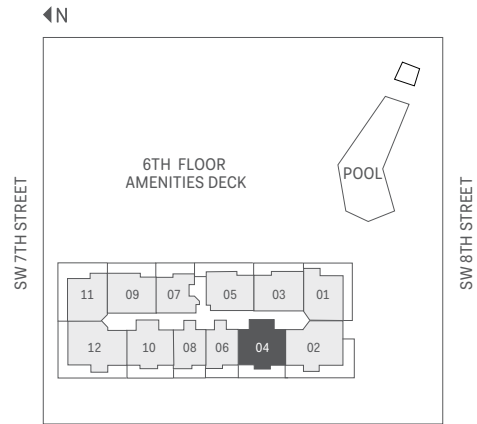


Stated dimensions are measured to the exterior boundaries of the exterior walls and the centerline of interior demising walls, including common elements such as structural walls and other interior structural components of the building, and in fact vary from the dimensions that would be determined by using the description and definition of the "Unit" set forth in the Declaration (which generally only includes the interior airspace between the perimeter walls and excludes interior structural components). For your reference, the area of the Unit, determined in accordance with those defined unit boundaries, is 1,261 square feet (levels 10, 12, 14-21), 1,281 square feet (levels 22-33) and 1,296 square feet (levels 34-41). Note that measurements of rooms set forth on this floor plan are generally taken at the greatest points of each given room (as if the room were a perfect rectangle), without regard for any cutouts. Accordingly, the area of the actual room will typically be smaller than the product obtained by multiplying the stated length times width. All dimensions are approximate and may vary with actual construction, and all floor plans and development plans are subject to change. The size and configuration of balconies and terraces varies throughout the building. The balcony depicted above is among the larger balconies and is not reflective of the actual size or configuration of the balcony for each unit of this unit type. For the actual size and configuration of the balcony for your unit, see Exhibit "2" to the Declaration of Condominium. See legal disclaimer on back cover.

# 04 LINE

## 2 BEDROOMS | 2.5 BATHROOMS | DEN FLOORS: 12, 14-41

RESIDENCE (12, 14-21)	1,519 sq. ft.	141 sq. mt.
RESIDENCE (22-33)	1,520 sq. ft.	141 sq. mt.
RESIDENCE (34-41)	1,528 sq. ft.	142 sq. mt.
BALCONY	84-297 sq. ft.	8-28 sq. mt.
<b>TOTAL</b>	<b>1,467-1,825 sq. ft.</b>	<b>136-169 sq. mt.</b>



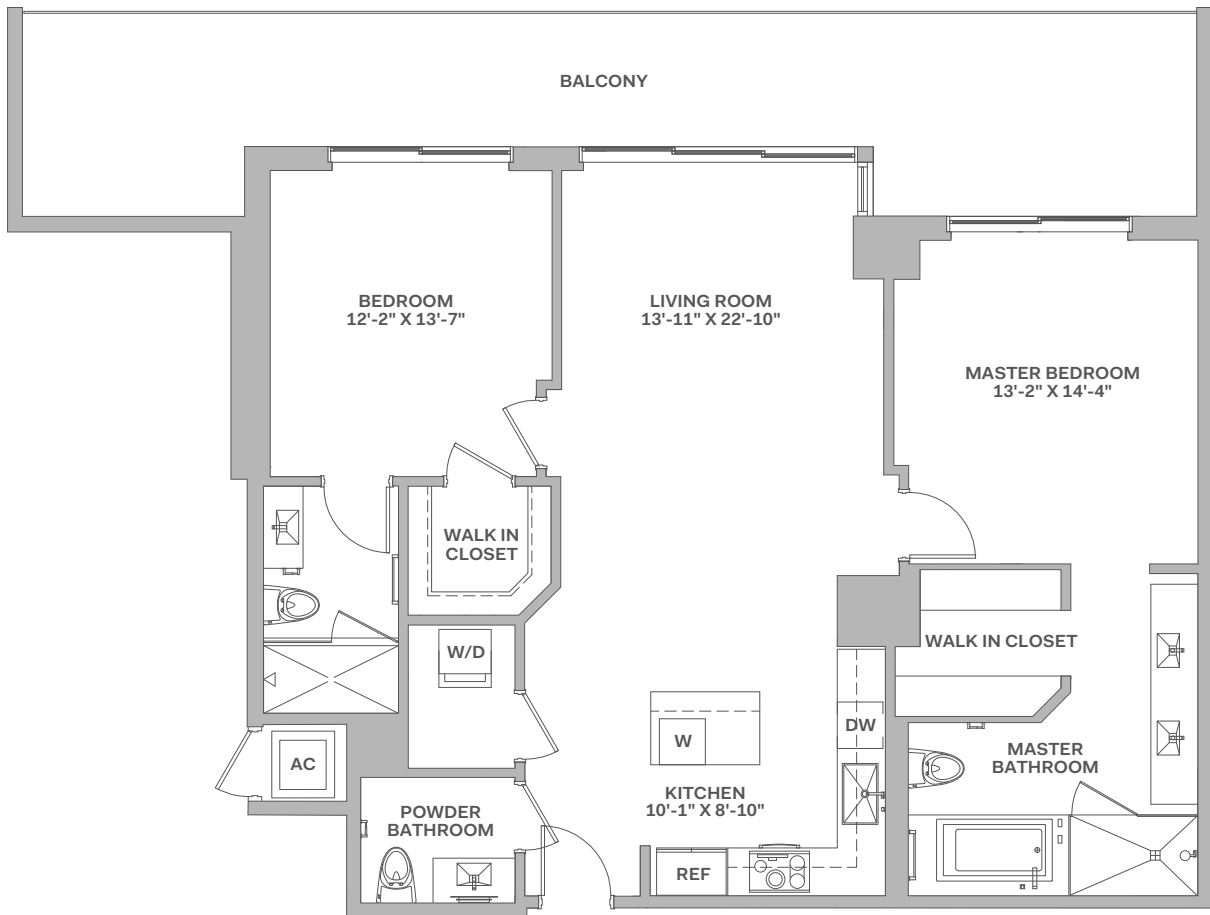
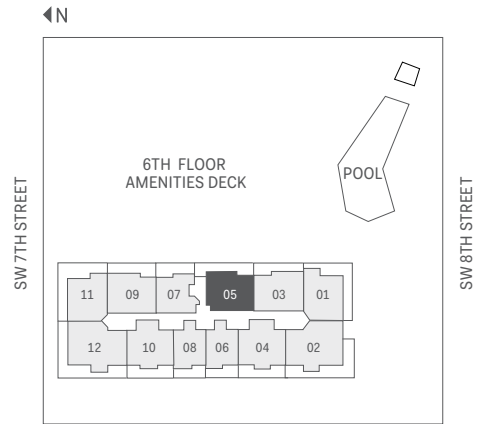
Stated dimensions are measured to the exterior boundaries of the exterior walls and the centerline of interior demising walls, including common elements such as structural walls and other interior structural components of the building, and in fact vary from the dimensions that would be determined by using the description and definition of the "Unit" set forth in the Declaration (which generally only includes the interior airspace between the perimeter walls and excludes interior structural components). For your reference, the area of the Unit, determined in accordance with those defined unit boundaries, is 1,383 square feet (levels 12, 14-21), 1,400 square feet (levels 22-33), and 1,407 square feet (levels 34-41). Note that measurements of rooms set forth on this floor plan are generally taken at the greatest points of each given room (as if the room were a perfect rectangle), without regard for any cutouts. Accordingly, the area of the actual room will typically be smaller than the product obtained by multiplying the stated length times width. All dimensions are approximate and may vary with actual construction, and all floor plans and development plans are subject to change. The size and configuration of balconies and terraces varies throughout the building. The balcony depicted above is among the larger balconies and is not reflective of the actual size or configuration of the balcony for each unit of this unit type. For the actual size and configuration of the balcony for your unit, see Exhibit "2" to the Declaration of Condominium. See legal disclaimer on back cover.

**05**  
LINE

## 2 BEDROOMS | 2.5 BATHROOMS

FLOORS: 9-12, 14-41

RESIDENCE (9-12, 14-21)	1,276 sq. ft.	119 sq. mt.
RESIDENCE (22-33)	1,275 sq. ft.	118 sq. mt.
RESIDENCE (34-41)	1,281 sq. ft.	119 sq. mt.
BALCONY	149-349 sq. ft.	14-32 sq. mt.
<b>TOTAL</b>	<b>1,424-1,625 sq. ft.</b>	<b>132-150 sq. mt.</b>



Stated dimensions are measured to the exterior boundaries of the exterior walls and the centerline of interior demising walls, including common elements such as structural walls and other interior structural components of the building, and in fact vary from the dimensions that would be determined by using the description and definition of the "Unit" set forth in the Declaration (which generally only includes the interior airspace between the perimeter walls and excludes interior structural components). For your reference, the area of the Unit, determined in accordance with those defined unit boundaries, is 1,202 square feet (levels 9-12, 14-21), 1,200 square feet (levels 22-33) and 1,206 square feet (levels 34-41). Note that measurements of rooms set forth on this floor plan are generally taken at the greatest points of each given room (as if the room were a perfect rectangle), without regard for any cutouts. Accordingly, the area of the actual room will typically be smaller than the product obtained by multiplying the stated length times width. All dimensions are approximate and may vary with actual construction, and all floor plans and development plans are subject to change. The size and configuration of balconies and terraces varies throughout the building. The balcony depicted above is among the larger balconies and is not reflective of the actual size or configuration of the balcony for each unit of this unit type. For the actual size and configuration of the balcony for your unit, see Exhibit "2" to the Declaration of Condominium. See legal disclaimer on back cover.

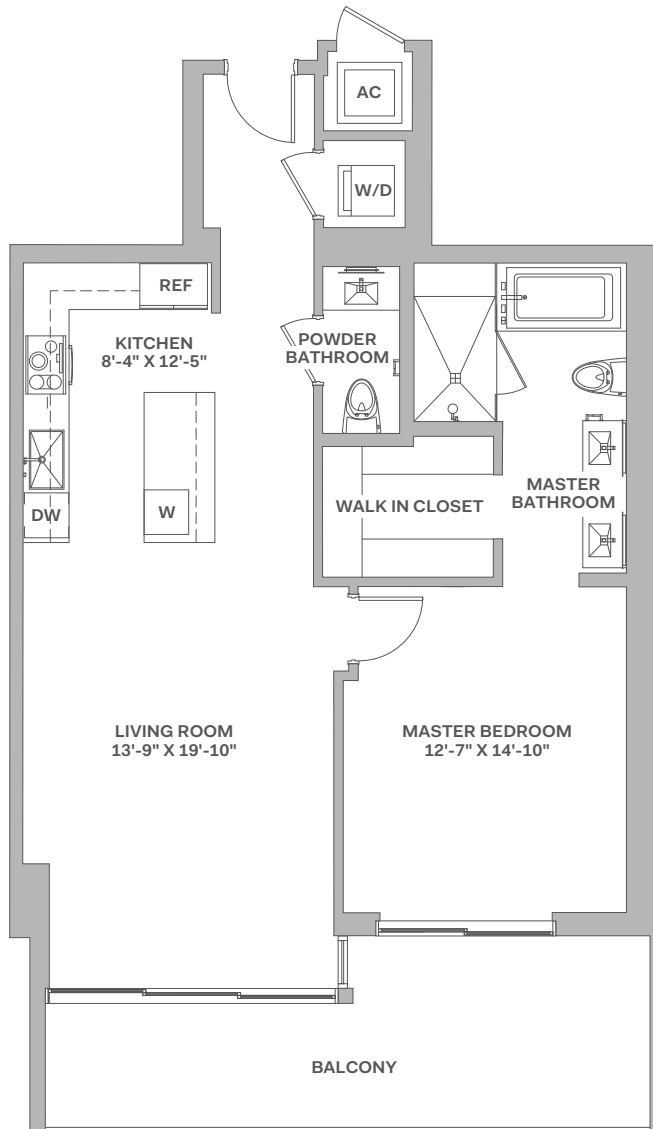
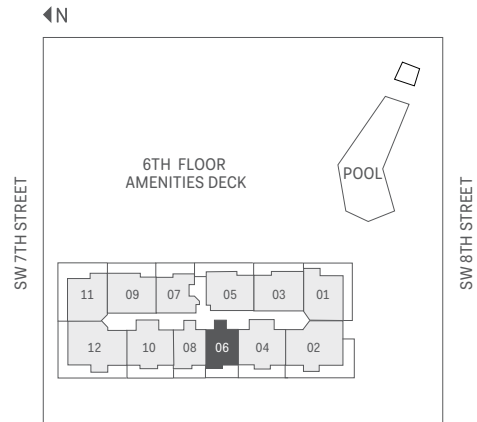
# 06

LINE

## 1 BEDROOM | 1.5 BATHROOMS

FLOORS: 8-12, 14-41

RESIDENCE (9-12, 14-21)	983 sq. ft.	91 sq. mt.
RESIDENCE (22-33)	982 sq. ft.	91 sq. mt.
RESIDENCE (34-41)	986 sq. ft.	92 sq. mt.
BALCONY	83-187 sq. ft.	8-17 sq. mt.
TOTAL	1,065-1,170 sq. ft.	98-108 sq. mt.



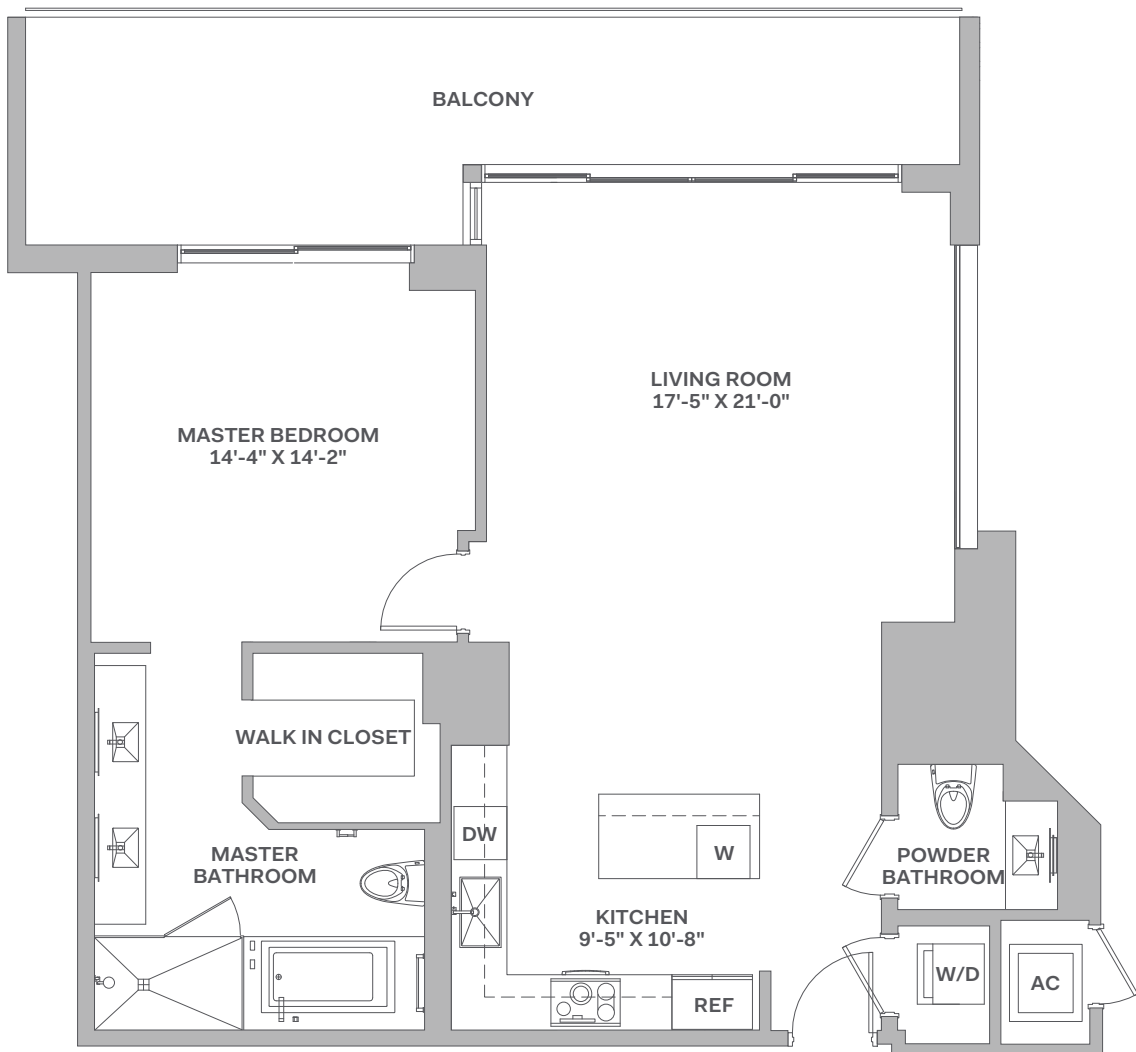
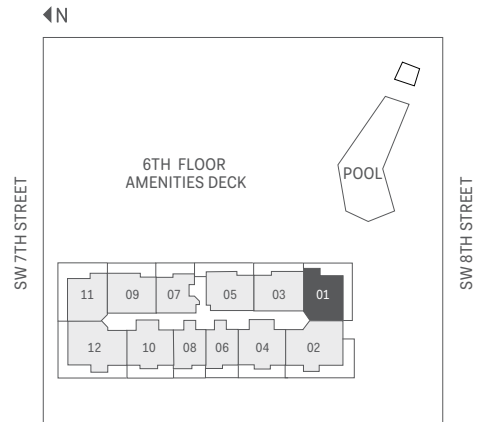
Stated dimensions are measured to the exterior boundaries of the exterior walls and the centerline of interior demising walls, including common elements such as structural walls and other interior structural components of the building, and in fact vary from the dimensions that would be determined by using the description and definition of the "Unit" set forth in the Declaration (which generally only includes the interior airspace between the perimeter walls and excludes interior structural components). For your reference, the area of the Unit, determined in accordance with those defined unit boundaries, is 886 square feet (levels 9-12, 14-21), 887 square feet (levels 22-33) and 889 square feet (levels 34-41). Note that measurements of rooms set forth on this floor plan are generally taken at the greatest points of each given room (as if the room were a perfect rectangle), without regard for any cutouts. Accordingly, the area of the actual room will typically be smaller than the product obtained by multiplying the stated length times width. All dimensions are approximate and may vary with actual construction, and all floor plans and development plans are subject to change. The size and configuration of balconies and terraces varies throughout the building. The balcony depicted above is among the larger balconies and is not reflective of the actual size or configuration of the balcony for each unit of this unit type. For the actual size and configuration of the balcony for your unit, see Exhibit "2" to the Declaration of Condominium. See legal disclaimer on back cover.

**07**  
LINE

# 1 BEDROOM | 1.5 BATHROOMS

FLOORS: 8-12, 14-41

RESIDENCE	1,070 sq. ft.	99 sq. mt.
BALCONY	137-241 sq. ft.	13-22 sq. mt.
TOTAL	1,207-1,311 sq. ft.	112-121 sq. mt.



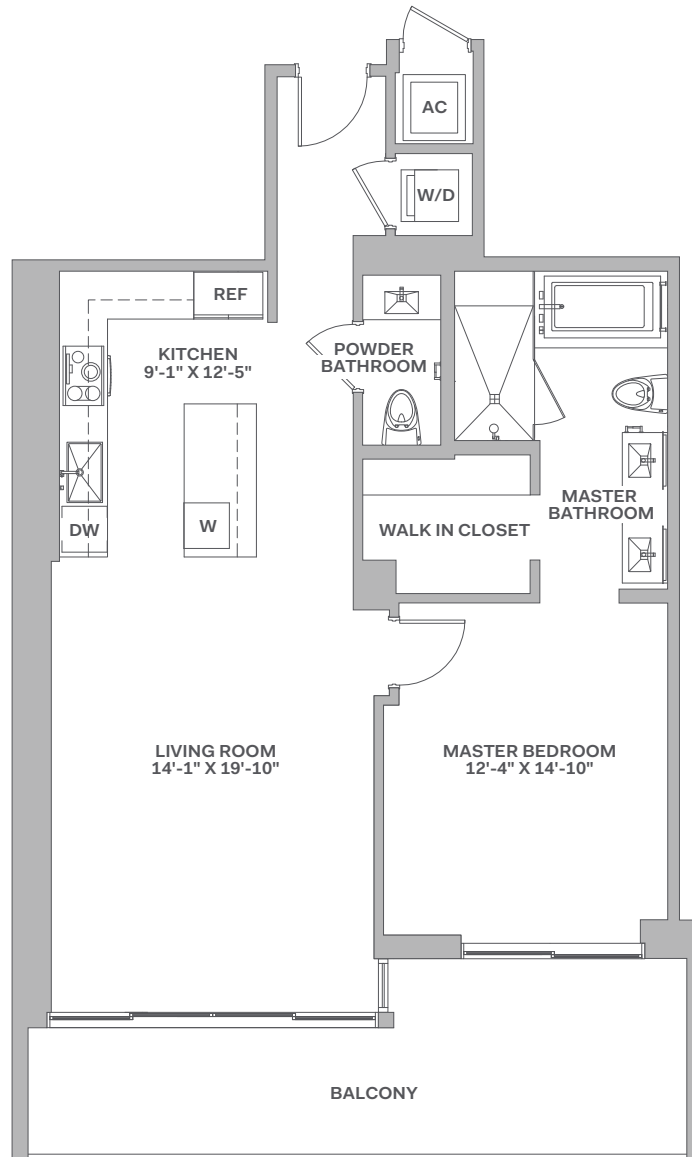
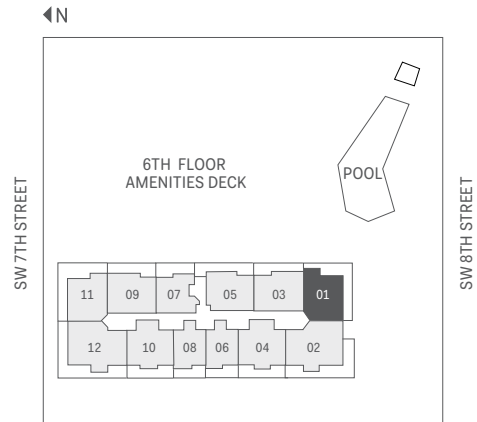
Stated dimensions are measured to the exterior boundaries of the exterior walls and the centerline of interior demising walls, including common elements such as structural walls and other interior structural components of the building, and in fact vary from the dimensions that would be determined by using the description and definition of the "Unit" set forth in the Declaration (which generally only includes the interior airspace between the perimeter walls and excludes interior structural components). For your reference, the area of the Unit, determined in accordance with those defined unit boundaries, is 994 square feet (levels 8-12, 14-33) and 997 square feet (levels 34-41). Note that measurements of rooms set forth on this floor plan are generally taken at the greatest points of each given room (as if the room were a perfect rectangle), without regard for any cutouts. Accordingly, the area of the actual room will typically be smaller than the product obtained by multiplying the stated length times width. All dimensions are approximate and may vary with actual construction, and all floor plans and development plans are subject to change. The size and configuration of balconies and terraces varies throughout the building. The balcony depicted above is among the larger balconies and is not reflective of the actual size or configuration of the balcony for each unit of this unit type. For the actual size and configuration of the balcony for your unit, see Exhibit "2" to the Declaration of Condominium. See legal disclaimer on back cover.

# 08 LINE

## 1 BEDROOM | 1.5 BATHROOMS

FLOORS: 8-12, 14-41

RESIDENCE (8-12, 14-33)	986 sq. ft.	92 sq. mt.
RESIDENCE (34-41)	987 sq. ft.	92 sq. mt.
BALCONY	104-196 sq. ft.	10-18 sq. mt.
<b>TOTAL</b>	<b>1,090-1,187 sq. ft.</b>	<b>101-110 sq. mt.</b>



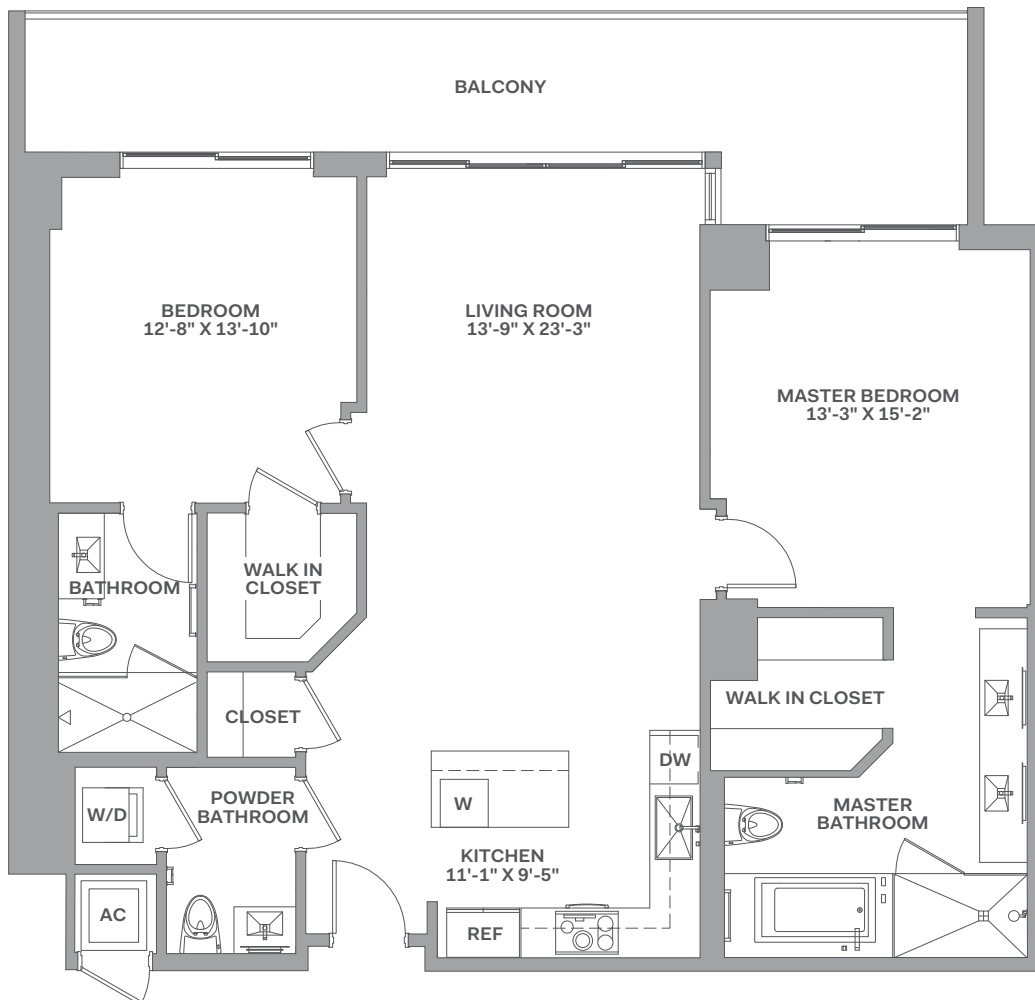
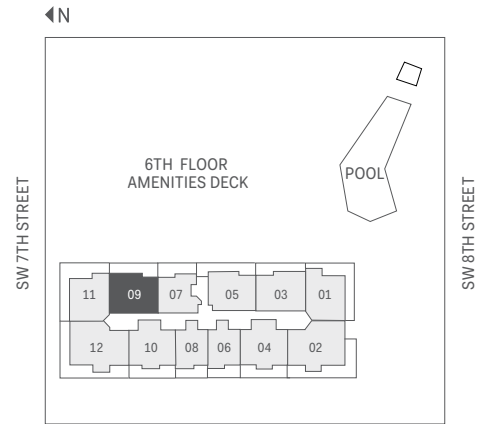
Stated dimensions are measured to the exterior boundaries of the exterior walls and the centerline of interior demising walls, including common elements such as structural walls and other interior structural components of the building, and in fact vary from the dimensions that would be determined by using the description and definition of the "Unit" set forth in the Declaration (which generally only includes the interior airspace between the perimeter walls and excludes interior structural components). For your reference, the area of the Unit, determined in accordance with those defined unit boundaries, is 883 square feet (levels 8-12, 14-33) and 885 square feet (levels 34-41). Note that measurements of rooms set forth on this floor plan are generally taken at the greatest points of each given room (as if the room were a perfect rectangle), without regard for any cutouts. Accordingly, the area of the actual room will typically be smaller than the product obtained by multiplying the stated length times width. All dimensions are approximate and may vary with actual construction, and all floor plans and development plans are subject to change. The size and configuration of balconies and terraces varies throughout the building. The balcony depicted above is among the larger balconies and is not reflective of the actual size or configuration of the balcony for each unit of this unit type. For the actual size and configuration of the balcony for your unit, see Exhibit "2" to the Declaration of Condominium. See legal disclaimer on back cover.



## 2 BEDROOMS | 2.5 BATHROOMS

FLOORS: 8-12, 14-41

RESIDENCE (8)	1,347 sq. ft.	125 sq. mt.
RESIDENCE (9-12, 14-21)	1,344 sq. ft.	125 sq. mt.
RESIDENCE (22-33)	1,356 sq. ft.	126 sq. mt.
RESIDENCE (34-41)	1,362 sq. ft.	127 sq. mt.
BALCONY	84-245 sq. ft.	8-23 sq. mt.
<b>TOTAL</b>	<b>1,440-1,589 sq. ft.</b>	<b>133-147 sq. mt.</b>

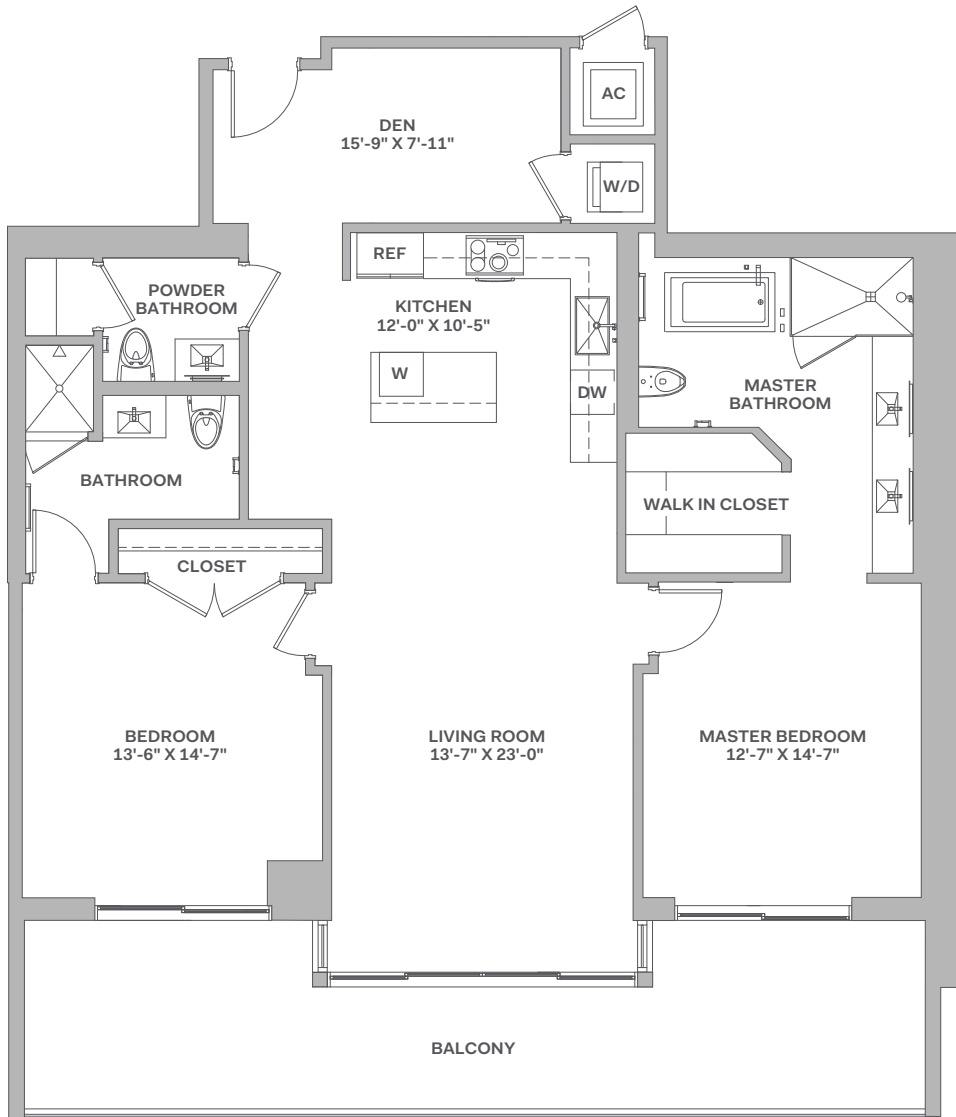
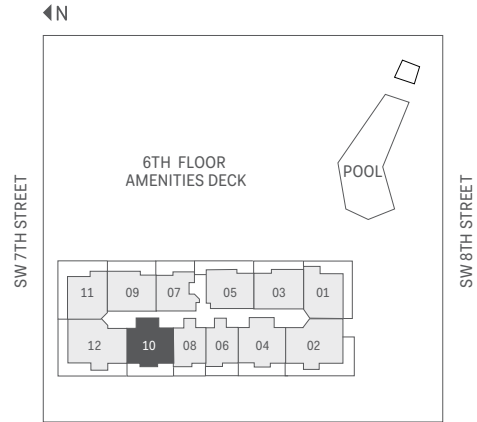


Stated dimensions are measured to the exterior boundaries of the exterior walls and the centerline of interior demising walls, including common elements such as structural walls and other interior structural components of the building, and in fact vary from the dimensions that would be determined by using the description and definition of the "Unit" set forth in the Declaration (which generally only includes the interior airspace between the perimeter walls and excludes interior structural components). For your reference, the area of the Unit, determined in accordance with those defined unit boundaries, is 1,238 square feet (levels 8-12, 14-21), 1,249 square feet (levels 22-33) and 1,259 square feet (levels 34-41). Note that measurements of rooms set forth on this floor plan are generally taken at the greatest points of each given room (as if the room were a perfect rectangle), without regard for any cutouts. Accordingly, the area of the actual room will typically be smaller than the product obtained by multiplying the stated length times width. All dimensions are approximate and may vary with actual construction, and all floor plans and development plans are subject to change. The size and configuration of balconies and terraces varies throughout the building. The balcony depicted above is among the larger balconies and is not reflective of the actual size or configuration of the balcony for each unit of this unit type. For the actual size and configuration of the balcony for your unit, see Exhibit "2" to the Declaration of Condominium. See legal disclaimer on back cover.

# 10 LINE

## 2 BEDROOMS | 2 BATHROOMS | DEN FLOORS: 8-12, 14-41

RESIDENCE (8-12, 14-33)	1,504 sq. ft.	140 sq. mt.
RESIDENCE (34-41)	1,515 sq. ft.	141 sq. mt.
BALCONY	131-300 sq. ft.	12-28 sq. mt.
<b>TOTAL</b>	<b>1,635-1,804 sq. ft.</b>	<b>151-167 sq. mt.</b>



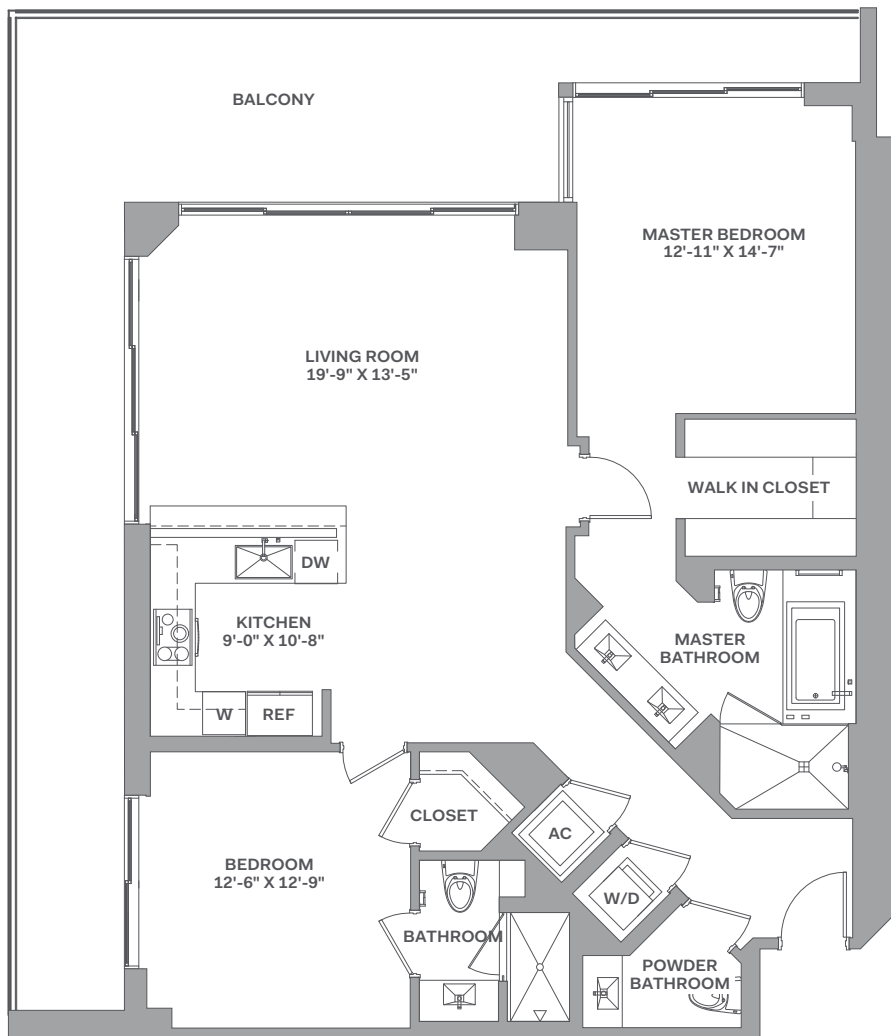
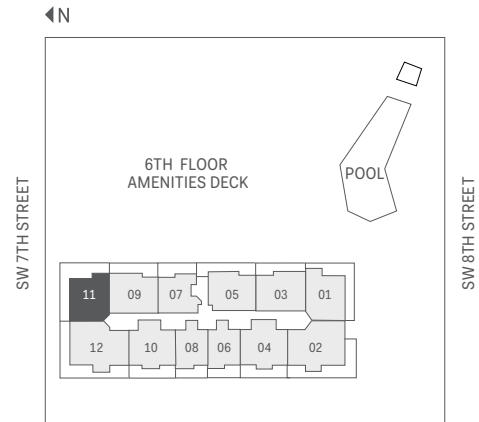
Stated dimensions are measured to the exterior boundaries of the exterior walls and the centerline of interior demising walls, including common elements such as structural walls and other interior structural components of the building, and in fact vary from the dimensions that would be determined by using the description and definition of the "Unit" set forth in the Declaration (which generally only includes the interior airspace between the perimeter walls and excludes interior structural components). For your reference, the area of the Unit, determined in accordance with those defined unit boundaries, is 1,370 square feet (levels 8-12, 14-21), 1,393 square feet (levels 22-33), and 1,401 square feet (levels 34-41). Note that measurements of rooms set forth on this floor plan are generally taken at the greatest points of each given room (as if the room were a perfect rectangle), without regard for any cutouts. Accordingly, the area of the actual room will typically be smaller than the product obtained by multiplying the stated length times width. All dimensions are approximate and may vary with actual construction, and all floor plans and development plans are subject to change. The size and configuration of balconies and terraces varies throughout the building. The balcony depicted above is among the larger balconies and is not reflective of the actual size or configuration of the balcony for each unit of this unit type. For the actual size and configuration of the balcony for your unit, see Exhibit "2" to the Declaration of Condominium. See legal disclaimer on back cover.

# 11 LINE

## 2 BEDROOMS | 2.5 BATHROOMS

FLOORS: 7-12, 14-36

RESIDENCE (7-12, 14-21)	1,391 sq. ft.	129 sq. mt.
RESIDENCE (22-33)	1,383 sq. ft.	128 sq. mt.
RESIDENCE (34-36)	1,377 sq. ft.	128 sq. mt.
BALCONY	292-441 sq. ft.	27-41 sq. mt.
TOTAL	1,675-1,831 sq. ft.	155-170 sq. mt.



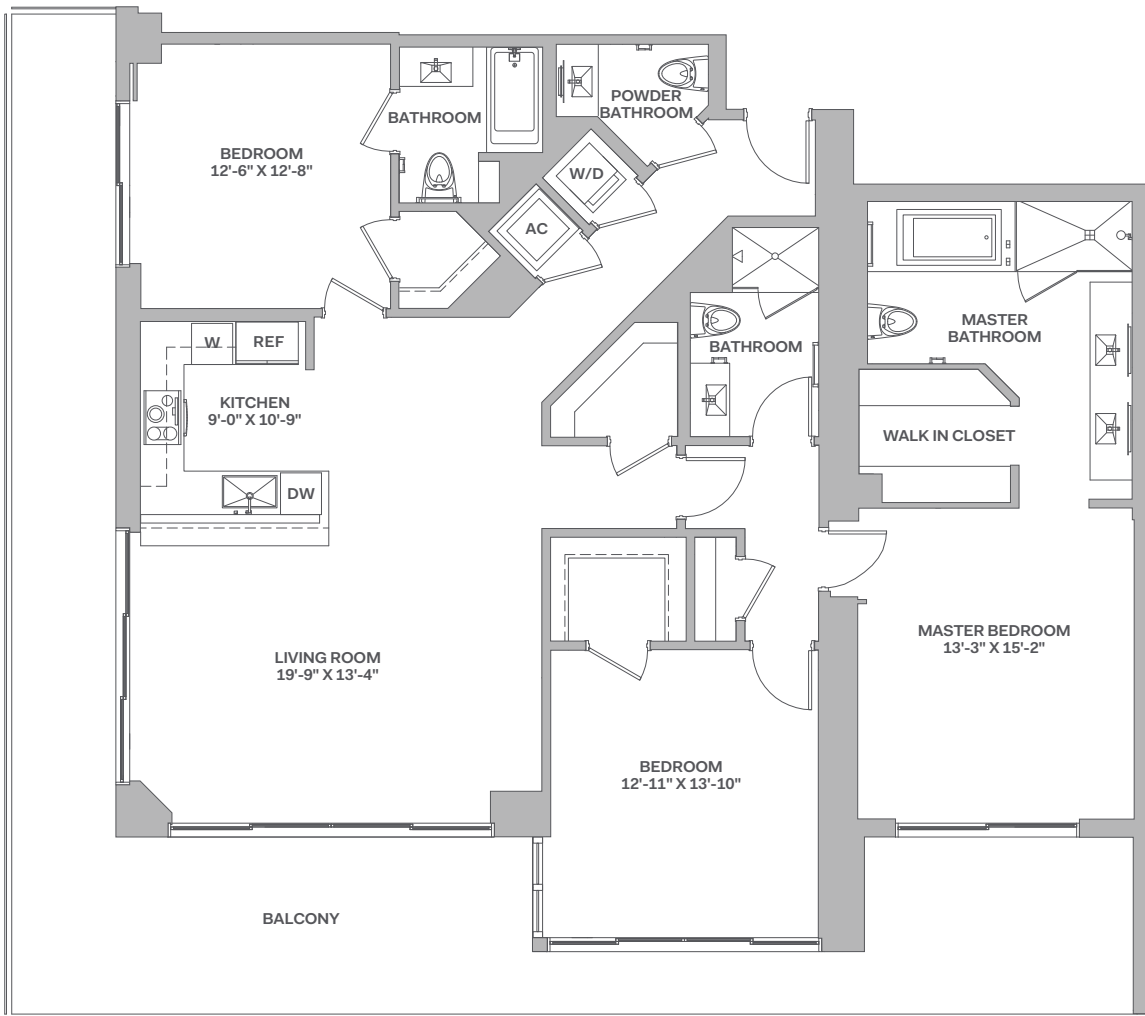
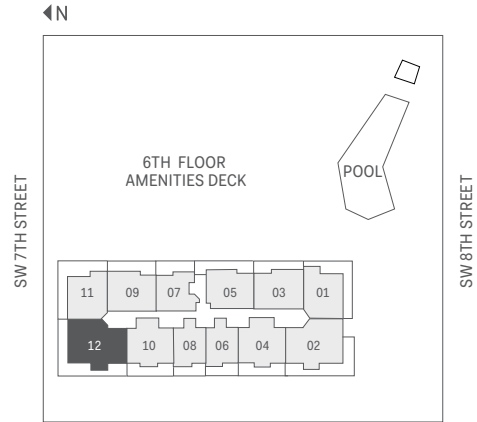
Stated dimensions are measured to the exterior boundaries of the exterior walls and the centerline of interior demising walls, including common elements such as structural walls and other interior structural components of the building, and in fact vary from the dimensions that would be determined by using the description and definition of the "Unit" set forth in the Declaration (which generally only includes the interior airspace between the perimeter walls and excludes interior structural components). For your reference, the area of the Unit, determined in accordance with those defined unit boundaries, is 1,264 square feet (levels 7-12, 14-33) and 1,266 square feet (levels 34-36). Note that measurements of rooms set forth on this floor plan are generally taken at the greatest points of each given room (as if the room were a perfect rectangle), without regard for any cutouts. Accordingly, the area of the actual room will typically be smaller than the product obtained by multiplying the stated length times width. All dimensions are approximate and may vary with actual construction, and all floor plans and development plans are subject to change. The size and configuration of balconies and terraces varies throughout the building. The balcony depicted above is among the larger balconies and is not reflective of the actual size or configuration of the balcony for each unit of this unit type. For the actual size and configuration of the balcony for your unit, see Exhibit "2" to the Declaration of Condominium. See legal disclaimer on back cover.

# 12 LINE

## 3 BEDROOMS | 3.5 BATHROOMS

FLOORS: 7-12, 14-36

RESIDENCE (7-12, 14-21)	1,835 sq. ft.	170 sq. mt.
RESIDENCE (22-36)	1,839 sq. ft.	171 sq. mt.
BALCONY	338-568 sq. ft.	31-53 sq. mt.
<b>TOTAL</b>	<b>2,178-2,407 sq. ft.</b>	<b>202-223 sq. mt.</b>



Stated dimensions are measured to the exterior boundaries of the exterior walls and the centerline of interior demising walls, including common elements such as structural walls and other interior structural components of the building, and in fact vary from the dimensions that would be determined by using the description and definition of the "Unit" set forth in the Declaration (which generally only includes the interior airspace between the perimeter walls and excludes interior structural components). For your reference, the area of the Unit, determined in accordance with those defined unit boundaries, is 1,647 square feet (level 7-12, 14-21), 1,664 SF (levels 22-33) and 1,676 SF (levels 34-36). Note that measurements of rooms set forth on this floor plan are generally taken at the greatest points of each given room (as if the room were a perfect rectangle), without regard for any cutouts. Accordingly, the area of the actual room will typically be smaller than the product obtained by multiplying the stated length times width. All dimensions are approximate and may vary with actual construction, and all floor plans and development plans are subject to change. The size and configuration of balconies and terraces varies throughout the building. The balcony depicted above is among the larger balconies and is not reflective of the actual size or configuration of the balcony for each unit of this unit type. For the actual size and configuration of the balcony for your unit, see Exhibit "2" to the Declaration of Condominium. See legal disclaimer on back cover.